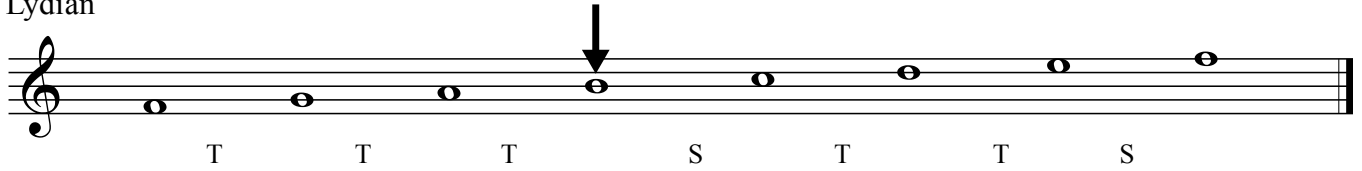


# The Lydian Mode

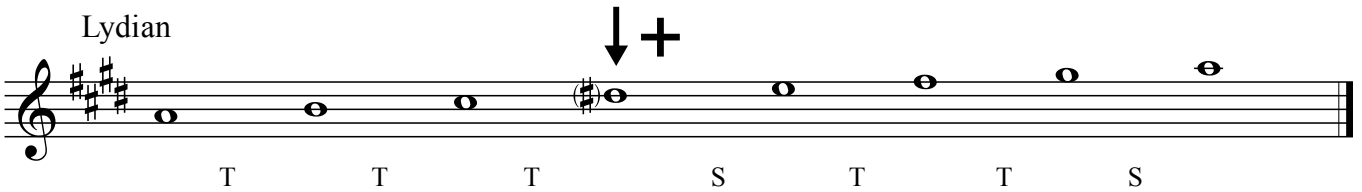
The Lydian mode starts on the fourth note of a scale. Here it's in C (the fourth note being F):

Lydian

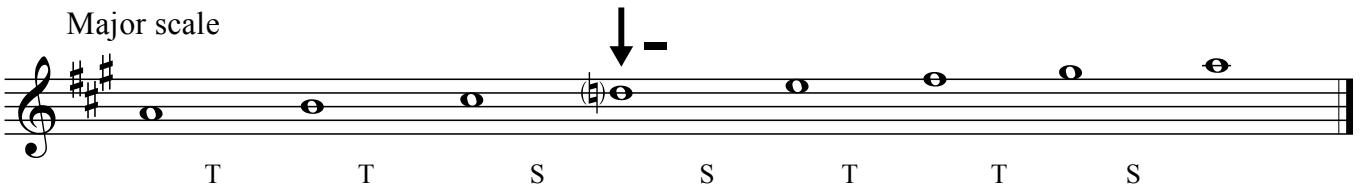


The mode is very similar to the major scale, but its characteristic 'colour' comes from having its fourth degree (it's all fours, this mode!) sharpened, like so:

Lydian



Major scale



Ravel opens *Daphnis* with an A major key signature (3 sharps) but the omnipresence of D# in both harmony and melody gives the music a 'Grecian', Lydian quality. Here, for instance, is the motif associated with the Nymphs:

A major

